



Wilmington School District 209u

Reopening Plan

2020-2021



## Wilmington School District 209u



In planning cooperatively with our Board of Education, local teachers union leadership and a District-wide e-Learning / Return to In-Person committee which was comprised of parents, teachers, building & district administrators, technology staff, and board of education representatives, we have worked diligently to clearly understand this most current guidance from the Illinois State Board of Education (ISBE) and Illinois Department of Public Health (IDPH) in an effort to continue planning for a safe and successful return to school in the Wilmington School District. Throughout the past few months, we have been closely following guidance from the Governor, Centers for Disease Control and Prevention (CDC), and Illinois / Will County Departments of Public Health. Please be aware that our number one priority is always focused on the safety and well-being of our Wilmington students, families and staff. Your patience and understanding has been very much appreciated as we studied the new mandates and continued moving forward in developing a plan which will not only help to ensure the safety & well-being of everyone, but will also be truly beneficial for our students socially, emotionally, and educationally – and respectful of the concerns and needs of parents & guardians.

The faculty, staff, and administration of the Wilmington School District are excited for the upcoming return to in-person teaching & learning, beginning on Wednesday, August 26th. The staff and faculty of the Wilmington School District are extremely excited to connect again in-person with our kids!

Please remember that all of our plans are being guided by recommendations and requirements provided to us by the Illinois State Board of Education and the Illinois Department of Public Health; and if this guidance changes again, our plans may also need to be adjusted between now and the first day of school... or at any point throughout the upcoming school year. Although the list below is not all-encompassing, please be aware that each of these following cornerstones will be included in our final return to school plan in Wilmington.

- Students and Staff must wear cloth face masks, unless they are younger than 2 years of age, have trouble breathing or are unconscious, incapacitated or otherwise unable to remove the face covering without assistance;
- No more than 50 individuals can be in one space at the same time;
- Social distancing should be observed, whenever possible;
- Individual students (parents) and staff will likely be required to conduct daily self-symptom screenings and temperature checks, self-certifying each morning that they are symptom-free... healthy, well & safe to attend school; and
- A requirement for an increase in school-wide cleaning and disinfection.

Please remember that these requirements are state-driven by the ISBE and Illinois Department of Public Health (IDPH), not being created or developed here locally by the Wilmington School District.

Thank you again for your patience and understanding. We will continue planning and communicating as well as possible as we prepare for the return to school in mid-August.



## Wilmington School District 209u



### Introduction:

On June 23, 2020 the Illinois State Board of Education and the Illinois Department of Public Health issued joint guidance titled “Starting the 2020-2021 School Year”. The joint guidance, on numerous occasions, mentioned that districts are encouraged to provide completely in-person instruction for all students. The joint guidance issued mandates and offered recommendations to ensure that a return to in-person instruction would be safe for students and staff members. Full guidance document can be found at: <https://www.isbe.net/Documents/Part-3-Transition-Planning-Phase-4.pdf>.

The Wilmington School District is making plans to provide normal on-site, in-person instruction in each of its four buildings starting on Wednesday, August 26<sup>th</sup>, 2020. A remote learning option will also be available, for any students / families who would prefer that form of instruction as we begin this new school year.

In order to effectively plan for the start of this new school year, we are going to ask **ALL parents & guardians** to complete an In-Person and Remote Learning Selection form for all individual students by **Wednesday, August 5, 2020**. This form can be found at <https://forms.gle/QbRFvJ7pCZ8BxaW99>.

This form along with additional informational materials will also be found on the COVID-19 Updates page of the District’s website: <https://www.wilmington.will.k12.il.us/COVID-19-Updates>.

*Please be aware that whatever final selection is made will be in place at least throughout the entire 1<sup>st</sup> trimester for students in k-8 and throughout the entire first semester for high school students.*

### **Mandates and Safety Recommendations**

The ISBE joint guidance document listed specific mandates and recommended other safety measures for consideration as districts return to on-site, in-person instruction. The Wilmington School District will follow the mandates included and implement the recommended safety measures as applicable.

The formal guidance document stated, “Districts must follow IDPH guidelines, which provide the following”:

- Require use of appropriate personal protective equipment (PPE), including face coverings;
- Prohibit more than 50 individuals from gathering in one space;
- Require social distancing be observed, as much as possible;



## Wilmington School District 209u



- Require that schools conduct symptom screenings and temperature checks or require that individuals self-certify that they are free of symptoms before entering school buildings; and,
- Require an increase in school-wide cleaning and disinfection.

### **Require use of appropriate personal protective equipment (PPE), including face coverings**

All Wilmington students and staff members will be required to wear a protective face covering (district approved cloth face mask) at all times during the school day.

The only exceptions are as follows:

- individuals for whom face coverings are medically contraindicated;
- when eating or drinking,
- when participating in band activities requiring the use of their mouths, or
- when outside and practicing safe social distancing.

All parents/guardians will be asked to acknowledge this requirement prior to the start of school by completing an electronic document titled “In-Person and Remote Learning Selection” form, that can be found at <https://forms.gle/QbRFvJ7pCZ8BxaW99>. This information will also be included on the COVID-19 Updates page of the District’s website:

<https://www.wilmington.will.k12.il.us/COVID-19-Updates>.

The Illinois State Board of Education is providing one mask per student / staff member. The Wilmington School District has also ordered one additional cloth face mask for all students. Clear plastic face shields will be used on rare occasions by students or staff members who provide proper medical documentation regarding the inability to wear a cloth face mask. Students with a proper mask exemption medical certification will be confidentially identified in the student data management system.

In a recent FAQ document, the state mentioned the following: “ISBE encourages school districts to consider opportunities for instruction and breaks outdoors, weather permitting. Individuals may remove face coverings outside when six-foot social distance is maintained.” Wilmington staff will be encouraged to find ways to provide these outside breaks and learning opportunities whenever possible.

### **Prohibit more than 50 individuals from gathering in one space**

The Wilmington School District is fortunate to have access to ample school busses with Illinois Central for safe transportation services, while also having sufficient space in our school buildings to accommodate this space capacity mandate. The guidance document from the state board of education does not clearly define a ‘space’, but it does provide multiple examples such as: a school bus, classroom, hallway, gymnasium, etc. Bus routes, lunch periods, and other periods



## Wilmington School District 209u



throughout each of instructional day will be adjusted in order to comply with this 50-person maximum capacity mandate. No more than 50 students will be assigned to any school bus; and no more than 50 people will be assigned to use any other identified space throughout the 2020-2021 school year.

### **Require social distancing be observed, as much as possible**

All Wilmington schools will strive to accommodate this safety-related requirement through multiple strategies. In a recent FAQ document provided by the Illinois State Board of Education, the following question was asked: “Are all individuals in a school building required to maintain social distance (remain 6 feet apart) at all times?” The state responded by saying: Social distance must be observed as much as possible. Desks do not need to be spaced 6 feet apart.” Although there may be times when students and staff are not strictly separated by a full 6-feet of distance, all instructional planning and organizational assignments will be aimed to promote appropriate social distancing while indoors and outdoors, as much and as often as possible.

### **Require that schools conduct symptom screenings and temperature checks or require that individuals self-certify that they are free of symptoms before entering school buildings**

It is essential that parents and guardians partner with the district in order to maintain a safe environment for all students. Parents/Guardians will be asked to complete an annual form agreeing to check their child/children prior to them going to school. All parents/guardians will be asked to acknowledge this daily self-certification requirement prior to the start of school by completing an electronic form titled **In-Person and Remote Learning Selection** form (<https://forms.gle/QbRFvJ7pCZ8BxaW99>).

If any uncommon symptoms exist when checking each morning, the child should stay at home. In the case of new or uncommon symptoms, communication will occur between the parent/guardian and the school in order to determine how to proceed. The most recent update to the joint transition document (ISBE/IDPH) requires this daily certification of health. All students shall also be checked at home each morning for a temperature before the start of each school day. If a temperature reading of 100.4 degrees or higher is recorded, the student should stay home instead of coming to school.

Additional temperature checks will also likely be taken at school each morning. Any student having a temp of 100.4 degrees or higher will be sent home. If any symptoms are noticed during the school day, the student will have his or her temperature checked and be asked to respond to questions regarding potential COVID-19 symptoms.



## Wilmington School District 209u



Possible COVID-19 symptoms include:

- Fever (100.4 degrees or higher),
- cough,
- chills,
- muscle aches,
- sore throat,
- runny nose / congestion,
- new loss of taste or smell,
- nausea and/or vomiting,
- diarrhea,
- shortness of breath,
- headache,
- fatigue.

The symptoms for COVID-19 can be the same symptoms related to many other medical ailments, ranging from something as simple as allergies to a common cold or flu. If a student has a known medical condition, it is important to have that information and documentation on file at the school (e.g. common allergies, a history of ear infections, occasional headaches, etc...).

The most recent guidance allows for students to remain at school if they display common symptoms (e.g. cough, headache, sore throat, congestion or runny nose, etc...), with a known and documented cause, as long as they have been fever free for 72 hours without medication given.

### **Require an increase in school wide cleaning and disinfection**

The Wilmington School District will increase cleaning and disinfecting processes. All school facilities will be cleaned daily using a green-cleaning solution. All high frequency touch surfaces such as desktops, light switches, faucets, etc. will be disinfected and cleansed frequently, with an emphasis to focus on disinfecting spaces carefully in between different student groups who will be utilizing the same space.

The Wilmington facilities department is also currently investigating the possibility of utilizing a new disinfecting strategy called “Electrostatic Spraying”. The District may be purchasing new equipment to help accomplish this new and additional layer of cleansing. Classrooms, hallways, offices, locker rooms, school buses, and restrooms could be electrostatically sprayed with a disinfecting solution whenever necessary.

Lunch tables and chairs will be cleaned and disinfected before, between, and after lunch periods.



## Wilmington School District 209u



Door handles and crash bars will be disinfected before school, a few times during the school day, and after school dismissal each day. The use of drinking fountains will be discouraged or unavailable for student use. Safer water coolers will be available and will be disinfected several times each day.

### **Social distancing and additional safety measures**

Pick-up/Drop-Off Procedures - All Buildings:

ALL schools will be limiting the number of outside visitors from entering the buildings. We ask that parents/guardians schedule appointments outside the school day whenever possible. If you need to pick up your child during the school day, please contact the school office upon arrival to the building. The office staff will need to make visual contact before releasing your student. There may be times when the office staff will ask you to come into the building. All visitors are required to wear a mask when entering schools.

### **Bruning Elementary School:**

- Student Arrival: Students will be allowed to enter the building at 8:00 AM. The bus riders will enter through the front doors, unloading one bus at a time. The car riders will enter through the back doors.
- Every student will have his/her temperature taken by administration and teachers at the beginning of each day at the front entry.
- There will be only one student assigned to each hook in the hallway for the student's belongings
- A separate nurse's station will be available for students who are identified with a fever or potential COVID-19 symptoms
- Desks will be separated and all facing one direction for first grade.
- There will be only four students assigned to each table in Kindergarten (typically 6).
- Each student will be given a lanyard to attach to their mask when taking it off.
- Dismissal: Car riders will be dismissed 10 minutes early at 2:20 PM. These students will wait in the gym using social distancing. Bus riders will be dismissed from classrooms, one bus at a time.
- Breakfast: Students will get their breakfast as they arrive at school, and take it to their classroom to eat.
- Lunch: Students will eat lunch in their classrooms. First Grade lunch will begin at 10:50 am, and Kindergarten lunch will begin at 11:20 am.
- There will be no lunch visitors allowed at this time.



## Wilmington School District 209u



- Recess: The students will be assigned to an activity station each day for recess. Students will be allowed to remove their mask for recess as long as they maintain social distancing.
- PE: PE class will take place outside weather permitting and masks can be removed. If PE has to be inside due to bad weather, masks will be worn and non-strenuous activities will take place. Any equipment used will be disinfected between each class.
- Restrooms: Each classroom will have scheduled restroom breaks. A limited number of students will be allowed in the restroom at one time to allow for social distancing and proper hand washing.
- Supplies: There will be NO sharing of supplies. Each student will only use his/her supplies.
- Each Kindergarten student will be given specific toys to play with during free play. All toys will be disinfected before being used by the next student.
- Each Kindergarten student will need their own rest mat.
- Hallways: The students will use the right side of the hallway when heading towards the classrooms, and the left side of the hallway when heading toward the office.
- Water: Each student will need to bring a water bottle to school with their name on it. The water fountains will be covered with only the bottle refill station working.
- Chrome Books: The Chrome books will be available for teachers to use in their classrooms. The Chrome books will be disinfected after each classroom use.
- Music: Any shared equipment will be disinfected between classes.
- Library: The Librarian will bring a crate of books to the classroom each week. All books will be disinfected before being checked out to the next class.
- We will be limiting the number of people in the Bruning Main Office with NO outside visitors unless called in advance.
- Parent volunteers will be limited at this time. All visitors will be temperature/symptom checked upon arrival.
- Signage will be posted at entrances and around school - IDPH/ISBE recommended signs.
- There will be NO attendance incentives at Bruning Elementary School.
- Hand washing times will be available many times throughout the day, along with hand sanitizer available for use.
- All assemblies are postponed

### **L.J. Stevens Intermediate School:**

- Walkers and Car riders: Walkers and car riders should NOT arrive at school before 7:45 AM. All walkers and car riders will enter through the 2<sup>nd</sup> grade hallway. Students will go to their classroom immediately. Teachers will dismiss students 3-4 at a time to locker banks





## Wilmington School District 209u



- Every student will have his/her temperature taken by a staff member at the beginning of each day
- Lockers will be used at the beginning and end of each day only. Locker use will be limited by numbers (3-4 at a time) to provide social distancing
- Desks will be placed to maximize social distancing.
- A separate nurse's station will be available for students who are identified with a fever or potential COVID-19 symptoms
- An alternative nurse's station (off of the main office) will still be available for students who aren't feeling well but are not exhibiting COVID symptoms
- Recess: We will have recess! Students will be dismissed to recess a small number at a time. Masks will be removed once students are outside but still socially distanced. Students will be at stations, with no more than ten students at a station. Stations will rotate daily. No shared equipment will be used at recess. The playground equipment will not be used during any recess. Students will be dismissed by station to return into the school. Teachers will meet the groups at the door to provide direction and spacing.
- Arrival to school: Students will be released into the building, one or two buses at a time to prevent multiple students from entering the school at once. All bus riders will enter through the game entrance. Students will go to their classrooms immediately. Teachers will dismiss students 3-4 at a time to locker banks.
- Dismissal: Walkers and car riders will be dismissed 5 minutes early. Students will wait for parents in multiple locations social distancing along the sidewalk.
- Bus riders will be dismissed one bus wave at a time.
- Signage will be posted at entrances and around school - IDPH/ISBE recommended signs.
- Breakfast: We will still have breakfast served in the cafeteria daily. Students will get their breakfast and proceed to their classroom.
- Lunch: Lunch will be eaten in the classrooms. Students will remain seated during lunch. Students will be dismissed 3-4 at a time to dispose of garbage and exit the building for recess. Classrooms will be cleaned once students are dismissed.
- Restrooms: There will be a limited number of students in the restroom at a time to allow for proper social distancing and handwashing.
- Weather permitting: Outdoor time will be encouraged each day to provide opportunities for students to remove masks. PE will be outside as much as possible "weather permitting".
- Supplies/Manipulatives: Students will not be sharing school supplies or classroom manipulatives. Each student will have his/her own individual set that will travel with him/her, if necessary, to specials.
- PE: Outside (mask removal while social distancing) if weather permits. If PE is inside due to weather, non-strenuous activities with masks. Examples of indoor activities could



## Wilmington School District 209u



include: stretching, healthy eating habits, yoga, rules of sports, and other non-contact/low impact activities. There will be no shared equipment. Students will bring personal water bottles with them to PE.

- Computer class: Staff and students will disinfect keyboards/mice between each class
- Library: Students will be filling out interest inventories and books will be delivered to students. Mrs. Quigley will teach the students to use the online card catalog to express interests in books to be checked out. Books will be quarantined for four days in book carts, as Reopening, Archives, Libraries, and Museums (REALM) Project research shows the virus is undetectable on books after three days.
- Music: There will be no shared equipment.
- Water fountains will be covered with the exception of bottle refill stations; students are encouraged to bring their own water bottles to be refilled and use the fountains appropriately.
- Building visitors (including lunch visits) and parent volunteers will be on pause. We will be limiting the number of people in the Stevens Intermediate Main Office with NO outside visitors unless called in advance.
- There will be NO attendance incentives at SIS.
- Hand washing times will be available many times throughout the day, along with hand sanitizer available for use.
- All assemblies are postponed
- Each student will be issued his/her own technology device (Chromebook). Students will spend time learning Google Classroom, Think Central, and IXL for future use. “Bring Your Own Device” is on pause.

### **Wilmington Middle School:**

- WMS Doors will open at 7:30 am for breakfast students only. All other students will not be allowed to enter the building until 7:45. Students will report directly to their first hour class to minimize hallway crowding.
- Students will not be allowed to use lockers. Students will carry book bags from class to class to reduce clustering and traffic in the hallways.
- Students will be assigned to the same Cohort of students for all classes throughout the day to minimize exposure to larger numbers of students.
- Passing periods and dismissals will be staggered to minimize large groups in the hallways
- Students will enter and exit through different locations by grade level. The 6<sup>th</sup> graders enter and exit the building on the south end near the softball field. The 7<sup>th</sup> graders will use the events entrance doors at the front of the building. The 8<sup>th</sup> grade students will enter and exit the building using the entrance near the main office.



## Wilmington School District 209u



- Teachers or administrators will take student temperatures during first hour class.
- Water fountains will be shut down. Students use their own water bottles for drinks throughout the day.
- Utilize multiple areas of the building for lunch to keep students socially distant while eating.
- Students will use the same chrome book throughout the entire school day.
- Remove all furniture from classrooms that are not hard surfaced.
- Students will not share supplies, books, resources, or technology.
- Give students and teachers time before and after class to clean their assigned seating area.
- Desks will be separated and face one direction
- A separate nurse's station will be available for students who are identified with a fever or potential COVID-19 symptoms
- Restrooms: Limited number of students in the restroom at a time to allow for proper social distancing and handwashing.
- There will be NO attendance incentives at WMS
- Teachers will be encouraged to offer outdoor time to students in order for masks to be removed
- Signage will be posted at entrances and around school- IDPH/ISBE recommended signs
- We will be limiting the number of people in the WMS main office with NO outside visitors, guest speakers, unless called in advance.
- All assemblies are postponed
- Physical Education Classes: Students are encouraged to dress in comfortable, active clothing for PE class. Locker rooms will not be utilized. No contact activities will be allowed. PE Classes will be conducted outside as much as possible. Shared equipment will be sanitized after each class. Students will be required to wash hands and/or use hand sanitizer before and after each class.
- Library - Students will use their own device and search for books of interest in the Follett Destiny system. Students and teachers will not be permitted to browse the library shelves - the librarian will pull the needed books. There will be a limit of 25 students at a time in the library. Books will be quarantined for three days in book carts, as Reopening, Archives, Libraries, and Museums (REALM) Project research shows the virus is undetectable on books after three days.
- Art/Industrial Arts/ Science/Stem /: Students may be paired in small lab groups to maintain social distancing. Demonstrations will be used when possible. Any shared lab equipment will be disinfected between classes. Students will be required to wash hands and/or use hand sanitizer before and after each class.
- Band / Choir Classes: The band room will be used; however, both classes will be encouraged to move outside when possible.



## Wilmington School District 209u



### Wilmington High School:

- WHS Doors will open at 7:25 am for breakfast. 1<sup>st</sup> hour class will begin at 7:55 am. Students should report to 1<sup>st</sup> hour class after entry/breakfast. Students should not congregate in the hallways nor cafetorium at any time.
- Every student will have his/her temperature taken by administration at the beginning of each day at the front entry.
- All students and staff members will be required to wear a mask at all times during the school day. There will be times during the day for students/staff to temporarily remove their mask (i.e. – outside activity while being social distanced and lunch).
- Signage will be posted at entrances and around school – IDPH/ISBE recommended signs.
- We will be limiting the number of people in the WHS Main Office with NO outside visitors unless called in advance.
- Students will be allowed to carry backpacks throughout the school day to each class.
- Lockers (hallway and physical education) will not be utilized.
- WHS Students will be issued a Chromebook on the 1<sup>st</sup> Day of School. The Chromebook must be brought to school and taken home each day. The expectation is that each student is responsible of charging the Chromebook each night.
- Staggered passing periods to minimize hallway crowds.
- Students may carry a water bottle in their backpack.
- Water fountains will not be used except to refill a water bottle.
- Hallways and Stairwells will be marked for appropriate traffic flow patterns.
- Lunch: we will offer four lunch periods using two locations (cafetorium & main gymnasium). 2 students per table (Typically 8 students per table).
- Restrooms: Limited number of students in the restroom at a time to allow for social distancing and handwashing.
- A separate nurse's station will be available for students who are identified with a fever or potential COVID-19 symptoms.
- Teachers will be encouraged to periodically offer outdoor time to students in order for masks to be removed while maintaining social distancing.
- The traditional grading scale will be followed per the Wilmington High School handbook. This will allow us to return to using GPA's at the end of each semester.
- Library: Computers/keyboards and tables will be cleaned and sanitized between classes. Students will be allowed to check-out library books. When a library book is returned, the book will sit for 3-days before being returned to the shelf. Students will not be allowed to browse the books on the library shelves.
- Computer Classes: Keyboards/mice will be wiped down and disinfected between each class.
- Physical Education Classes: Students are encouraged to dress in comfortable, active clothing for PE class. Locker rooms will not be utilized. No contact activities will be



## Wilmington School District 209u



allowed. PE Classes will be conducted outside as much as possible. Shared equipment will be sanitized after each class. Students will be required to wash hands and/or use hand sanitizer before and after each class.

- Science / Stem / Drafting Labs: Students may be paired in small lab groups to maintain social distancing. Demonstrations will be used when possible. Any shared lab equipment will be disinfected between classes. Students will be required to wash hands and/or use hand sanitizer before and after each class.
- Band / Choir Classes: The band room will be used; however, both classes will be encouraged to move outside when possible.
- Student desks will be sanitized with disinfectant spray at the end of every class period.

### **Remote Learning (If Needed):**

The Wilmington School District teachers and administrators participated in Google Classroom and Video conferencing trainings this summer to improve our Remote Learning instruction. If the state mandates a school closure for an emergency reason, the district will utilize the state issued remote learning planning days to allow teachers and administrators additional time to prepare for remote learning and communicate the plan with all students and parents. Teachers will also use time at the beginning of the year to prepare for a potential switch to the Remote Learning Plan. Any Remote Learning Plan is now mandated by the Illinois State Board of Education to consist of 5 daily clock hours of instruction and/or student work. Grades will be taken as though the students are participating in on-site instruction.

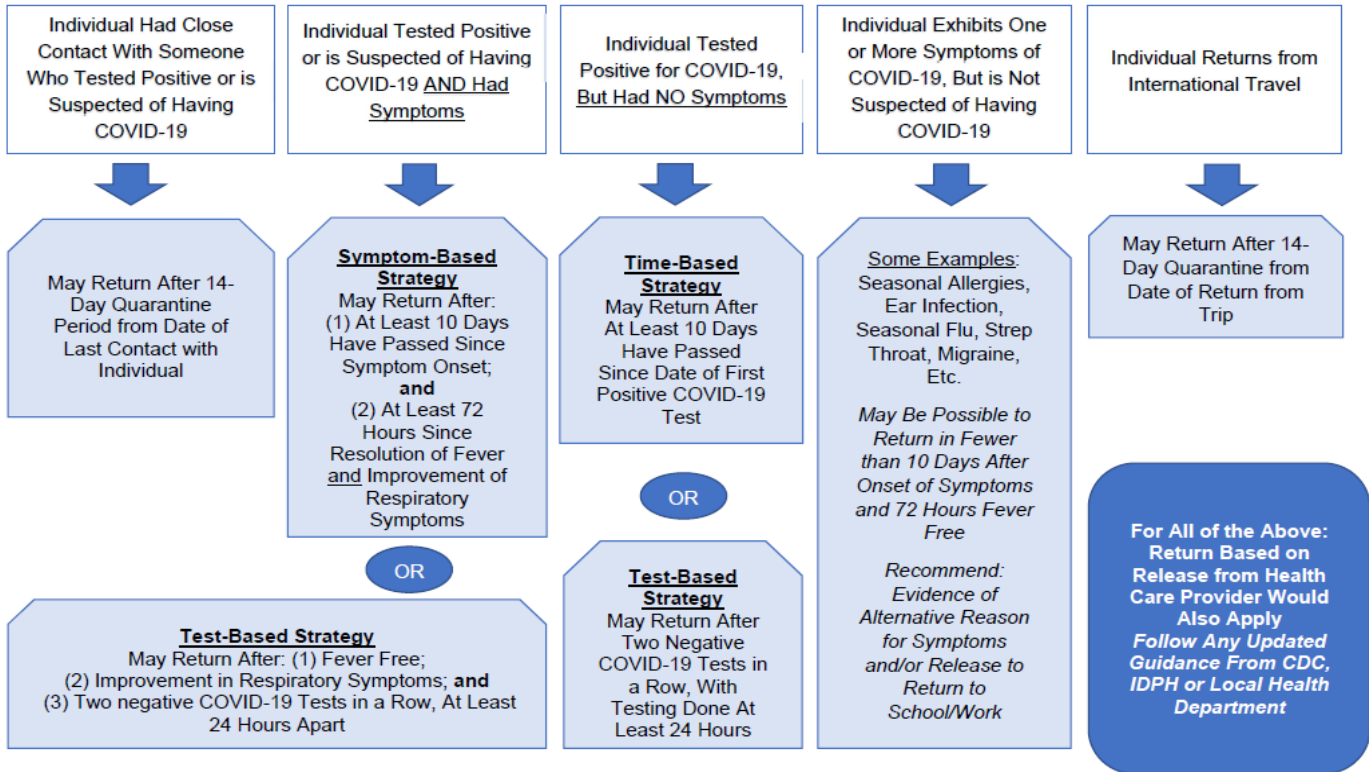
### **Health and Wellness Details**

#### **School Exclusion and Return to School or Work After a COVID-19 Related Absence**

Wilmington School District 209U will adhere to the guidance in the following flowchart produced by the Robbins Schwartz Law Firm. The Will County Health Department will be contacted as needed.



**RETURN TO SCHOOL/WORK FLOWCHART  
FOLLOWING A COVID-19 RELATED ABSENCE**  
July 7, 2020



Currently, testing is available through Morris Hospital (Morris, IL) and Riverside Medical Center (Kankakee, IL and Coal City Clinic) as long as it is ordered by a physician. Additional information is available through the Infection Control Department at each facility.

Morris Hospital: 815-942-2932

Riverside Medical Center: 815-933-1671

**Plan to Address Students Who Become Ill at School**

Staff members should contact the office before sending a student to the nurse’s station. An available staff member will come to the classroom, assess the situation, and take the student to the nurse’s station, or the secondary nursing station, in the building.



## Wilmington School District 209u



### **Internal Notification of Possible COVID-19 Case**

If more than two (2) students from a single class are sent home with possible COVID-19 symptoms, a member of the district administrative team should be contacted. Appropriate information will be shared with the proper departments (building level secretaries, custodial services, transportation, etc...).

### **Internal Notification of Positive COVID-19 Case**

If a student tests positive for COVID-19, the superintendent will be notified and all CDC/IDPH guidelines will be followed. The Will County Health Department will be contacted to gather guidance. Names of individuals (students, staff, family members) will remain confidential unless permission is given by an appropriate individual to release the information. Any area used by a symptomatic person will be closed to students and staff until proper cleaning and disinfecting occurs.

### **External Notification of Positive COVID-19 Case**

If a student or staff member tests positive for COVID-19, all parents will be notified. Parents/guardians of a student in close contact with the positive student or staff member (within 6 feet for more than 15 minutes) will be notified and the student will be required to follow the guidance in the flowchart shared on the previous page. All disinfecting and safety guidelines will be followed.

### **Contact Tracing Assistance**

Locker assignments will be separated as much as possible and will remain fixed at the elementary school. Lockers will not be utilized at the high school and middle school. Seating charts will be established and fixed for all locations housing students (buses, classrooms, cafeterias, etc...).

### **Conclusion**

This plan is based upon the current information from the Illinois State Board of Education and the Illinois Department of Public Health. It is subject to change at any time. If the state were to revert to a previous phase, we would make a seamless transition to remote learning. When the state advances to Phase 5, full-day on-site instruction will be mandatory for all Illinois districts. The Wilmington School District fortunately has the ability to offer state encouraged on-site instruction to all students while following all safety mandates and recommendations. This is not true of all districts simply due to enrollment and other extenuating circumstances. All communications regarding new information or updates will come from the District's mass messaging system. We look forward to a return to on-site instruction that follows the safety guidance recommended by the appropriate professional organizations.